



32 Lime Grove, Ruislip, HA4 8RY  
£1,395,000



32 Lime Grove, Ruislip, HA4 8RY

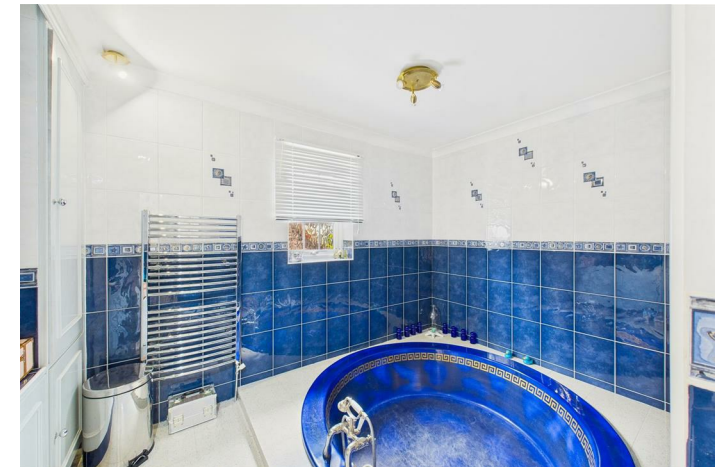
£1,395,000

We're delighted to bring to market this new, chain-free, double-fronted detached home, perfectly positioned within easy walking distance of the high street. Behind its attractive façade you'll find off-street parking for up to six cars, a generous garage and abundant built-in storage. A spacious rear garden and large outbuilding offer endless possibilities for relaxation or hobbies, the layout provides excellent potential to extend and tailor the space to your needs. This is a rare chance to secure a versatile family home with scope for growth—don't miss out!

**Description**



**Situation**

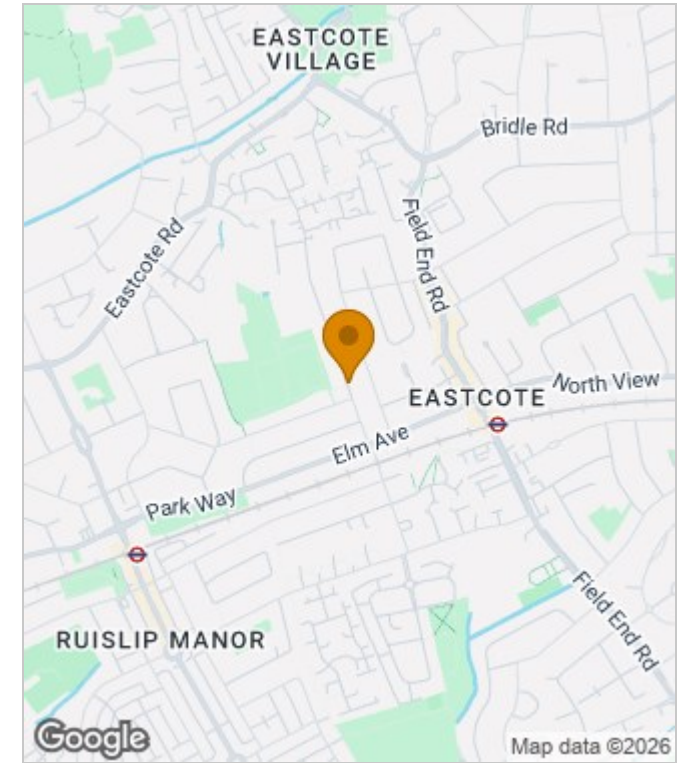


null  
Council Tax Band:  
Available:

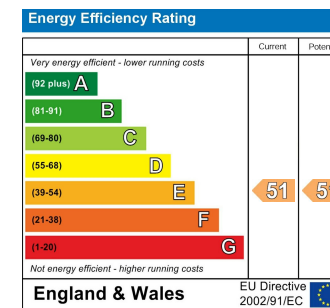
# Floor Plans



# Area Map



# Energy Performance Graph



These particulars, whilst believed to be accurate are set out as a general outline only for guidance and do not constitute any part of an offer or contract. Intending purchasers should not rely on them as statements of representation of fact, but must satisfy themselves by inspection or otherwise as to their accuracy. No person in this firm's employment has the authority to make or give any representation or warranty in respect of the property.

Suite 104, 14 Havelock Place Harrow, London, HA1 1LJ

Tel: 0208 488 6296 Email: [info@flagstonespg.co.uk](mailto:info@flagstonespg.co.uk) [www.flagstonespropertygroup.co.uk](http://www.flagstonespropertygroup.co.uk)